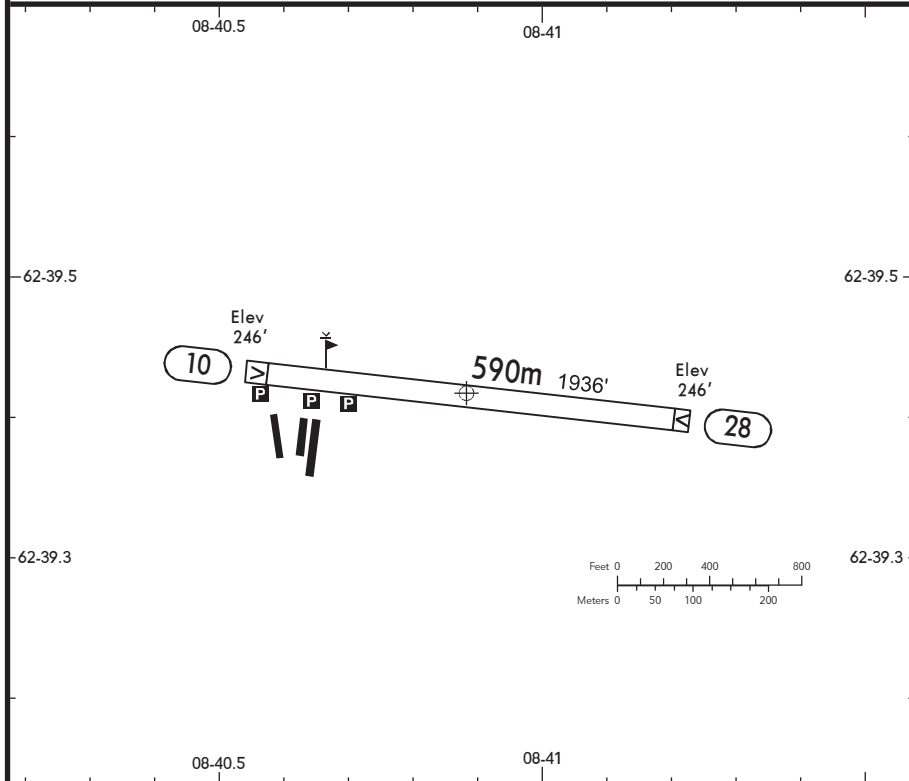


BRIEFING STRIP™

LOCATION Elev 246' /75m N62 39.4 E008 40.9	AIR/AIR VINNU TRAFFIC 123.500 ⁽¹⁾ (no, en)	ADMITTED AIRCRAFT
--	--	-----------------------

⁽¹⁾ Blind transmissions



SCALE 1:10000

RWY No	Dimension (m) - Surface	TORA (m)	LDA (m)	Strength	Lights
10	590 x 30 Grass	568	538		
28		560			

CAUTION: High terrain N & S of AD.
 Blind transmitting of position and intention are mandatory.
 PCL and ABN available: Key mike for 2SEC, lights remain on for 45MIN.
 Be aware of Model FLT's at AD.
 Be aware of deers on RWY.
 No regular snow removal.